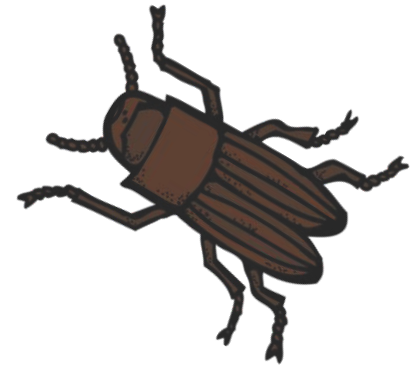


# Meet Your Mealworm



## Science Lab



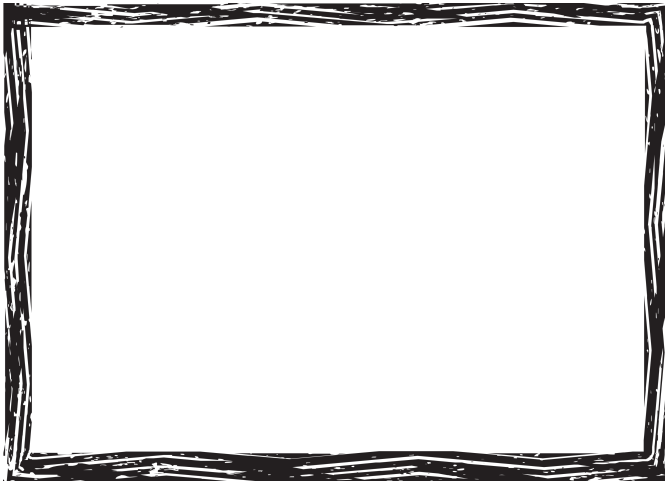
Using a live mealworm (larval stage), you will get to know a mealworm by completing this packet! You will need a ruler, a magnifying glass, a pipette, and some water for this lab.

Name \_\_\_\_\_



1. Describe your mealworm in as much detail as possible.

Sketch and color it here.



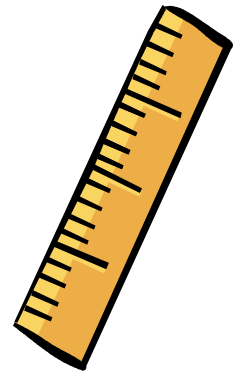
2. How can you tell the anterior (head) from the posterior (tail)?
3. Gently touch the mealworm. What does it feel like? Describe the texture.

4. Describe how the mealworm moves.



5. Place a ruler in front of the mealworm. What does the mealworm do?  
Why do you think it reacts this way?

6. Tap the table gently near the mealworm. What does the mealworm do?  
Why do you think it reacts this way?



7. Drop water onto the mealworm with a pipette. What does the mealworm do?  
Why do you think it reacts this way?



8. Look at the mealworm using a magnifying glass.  
What do you notice now that you did not notice before?

9. What is the difference between the ventral (belly) and dorsal (back) of the mealworm?



10. Try to measure the length of your mealworm.  
Why is it difficult to get an EXACT measurement for the length of the mealworm?
  
11. What happens when your mealworm meets one of your classmate's mealworms?  
What does the mealworm do? Why do you think it reacts this way?
  
12. There are six legs on the dorsal side of the mealworm. Feel them.  
What are they used for?



13. Hold the mealworm in your hand. What does the mealworm do?  
Why do you think it reacts this way?
  
14. Place the mealworm into a cup of dry oatmeal. What does the mealworm do?  
Why do you think it reacts this way?
  
15. Write some generalizations you can make about mealworms based on your experiences today with the live mealworms.

