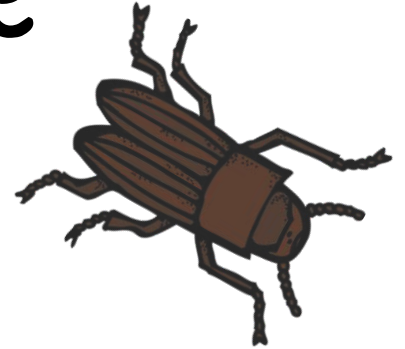


Meet Your Beetle Science Lab



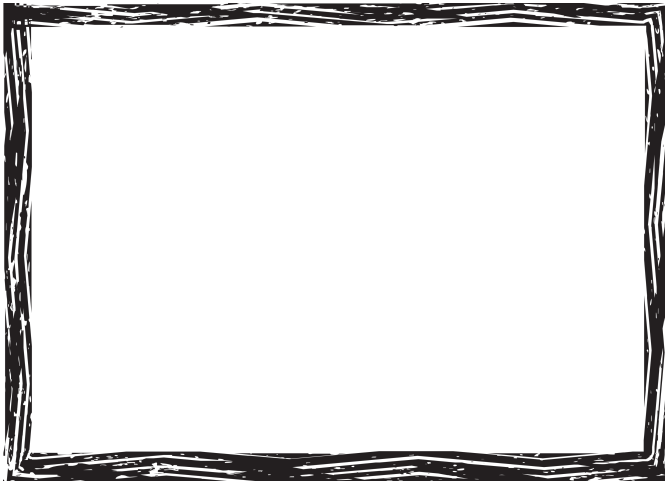
Using a live darkling beetle (adult stage), you will get to know a beetle by completing this packet! You will need a ruler, a magnifying glass, a pipette, water, and a cup of soil for this lab.

Name _____



1. Describe your darkling beetle in as much detail as possible.

Sketch and color it here.



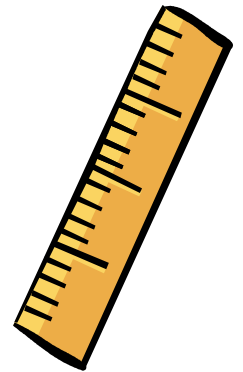
2. How can you tell the anterior (head) from the posterior (tail)?
3. Gently touch the beetle. What does it feel like? Describe the texture.

4. Describe how the beetle moves.



5. Place a ruler in front of the beetle. What does the beetle do?
Why do you think it reacts this way?

6. Tap the table gently near the beetle. What does the beetle do?
Why do you think it reacts this way?



7. Drop water onto the beetle with a pipette. What does the beetle do?
Why do you think it reacts this way?



8. Look at the beetle using a magnifying glass.
What do you notice now that you did not notice before?

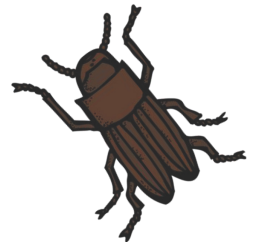
9. What is the difference between the ventral (belly) and dorsal (back) of the beetle?



10. Try to measure the length of your beetle.
Why is it difficult to get an EXACT measurement for the length of the beetle?

11. What happens when your beetle meets one of your classmate's beetles?
What does the beetle do? Why do you think it reacts this way?

12. There are six legs on the dorsal side of the beetle. Feel them.
What are they used for?



13. Hold the beetle in your hand. What does the beetle do?
Why do you think it reacts this way?

14. Place the beetle into a cup of soil. What does the beetle do?
Why do you think it reacts this way?

15. Write some generalizations you can make about darkling beetles based on your experiences today with the live beetle.

