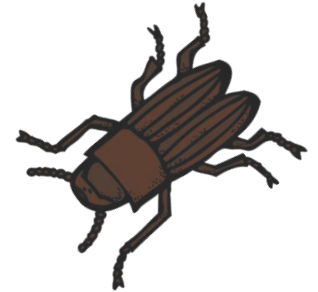


What Do Mealworms Like?

3 Part Science Lab



Using a live mealworm (larval stage), you will discover whether a mealworm prefers a certain color, light or darkness, and wet or dry environments.

Name _____



What Color Does a Mealworm Prefer?

Materials needed:

construction paper
(4 colors)
mealworms

Lay out four different colored squares of construction paper.

*Color in the colors you are using here.



Which color do you think mealworm will prefer?
Why?

Place the mealworm in the center of the four colors of paper. What happens? Conduct at least 5 different trials and record your observations and results for each one.

Trial #1	Trial #2	Trial #3	Trial #4	Trial #5

Based on your observations, which color does a mealworm prefer?
Why do you think you got these results?

Why did you choose these four colors? Now that you have conducted the experiment, would you have chosen different colors? Why or why not?

What are some of the results of your classmates during this experiment?
Do they match your results? Why or why not?

Does a Mealworm Prefer Light or Dark Areas?

Materials needed:

container
black paper
mealworm

Place a sheet of black paper over half of a plastic container.
Do you think a mealworm will prefer light or dark areas? Why?

Place the mealworm in the center of the container. What happens?

Conduct at least 5 different trials and record your observations and results for each one.

Trial #1	Trial #2	Trial #3	Trial #4	Trial #5

Based on your observations, does a mealworm prefer light or dark areas? Why do you think you got these results?

Now that you have conducted the experiment, are you surprised by these results? Why or why not?

What are some of the results of your classmates during this experiment? Do they match your results? Why or why not?

Does a mealworm prefer wet or dry areas?

Materials needed:

container
wet paper towel
dry paper towel
mealworms

Place a square of wet paper towel and a square of dry paper towel into a container. Do you think a mealworm will prefer wet or dry areas? Why?

Place the mealworm in the center of the container. What happens? Conduct at least 5 different trials and record your observations and results for each one.

Trial #1	Trial #2	Trial #3	Trial #4	Trial #5

Based on your observations, does a mealworm prefer wet or dry areas? Why do you think you got these results?

Now that you have conducted the experiment, are you surprised by these results? Why or why not?

What are some of the results of your classmates during this experiment? Do they match your results? Why or why not?